



DIESEL HOSE REEL

EN. Piusi Automatic hose reels for diesel and oil have been designed to ensure high efficiency. The sturdy structure can guarantee best performance also in heavy duty conditions.

Features:

- Reduced pressure loss
- Corrosion resistant: structure made of stainless steel
- Easy and versatile installation through the rotating support plate and the adjustable arm positions
- Hose stop
- Safety: lateral protective covers

ES. Los enrolladores de manguera automáticos Piusi para diesel y aceite han sido diseñado para garantizar una alta eficiencia. La estructura robusta garantiza el mejor rendimiento aún en condiciones de trabajo al límite.

Características:

- Pérdida de carga reducida
- Resistente a la corrosión: La estructura, en acero inoxidable
- Instalación fácil y versátil a través de la placa de soporte giratorio y las posiciones de los brazos regulables
- parada de manguera
- seguridad: Tapas laterales de protección

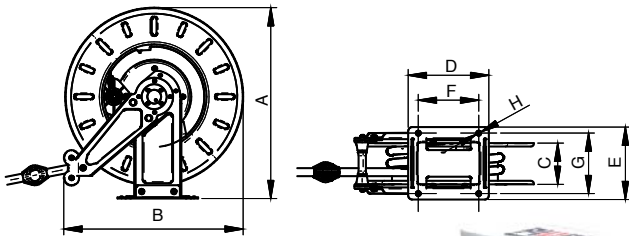
PT. Os enroladores para mangueira automáticos Piusi para diesel e óleo foram criados para garantir alta eficiência. A estrutura resistente garante o melhor desempenho também em condições severas de trabalho.

Características:

- Perda de pressão reduzida
- Resistência à corrosão: a estrutura de aço galvanizada a quente é moldada e revestida com pó de poliéster eletrostático, resistente aos raios UV
- A instalação fácil e versátil através da placa do suporte rotativo e as posições ajustáveis do braço
- Bloqueio da mangueira
- Segurança: coberturas de proteção laterais

DIMENSIONS

Model	A	B	C	D	E	F	G	H
HOSE REEL XL	512	470	227	200	305	160	260	12
HOSE REEL BIG	475	460	152	200	230	150	246	12
HOSE REEL SMALL	475	460	102	150	180	150	196	12



PRODUCTS' RANGE WEIGHT AND PACKAGING

Code	Weight		Packaging		
	kg	lbs	mm	inch	pcs/box
Without hose					
F00750000	19	41,9	550x260x540	21,6x10,2x21,3	1
F00750010	18	39,7	550x260x540	21,6x10,2x21,3	1
F00750080	15	33,1	550x200x540	21,6x7,9x21,3	1
F0075018A	27	59,5	560x350x560	22x13,7x22	1
With hose					
F00750020	26	57,3	550x260x540	21,6x10,2x21,3	1
F00750030	25	55,1	550x260x540	21,6x10,2x21,3	1
F00750040	22	49,5	550x260x540	21,6x10,2x21,3	1
F00750090	19	41,9	550x200x540	21,6x7,9x21,3	1
F00750100	27	59,5	550x260x540	21,6x10,2x21,3	1
F00750190	27	59,5	560x350x560	22x13,7x22	1
F00750130	23	50,7	550x260x540	21,6x10,2x21,3	1



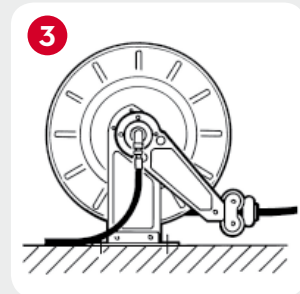
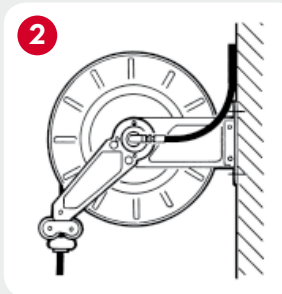
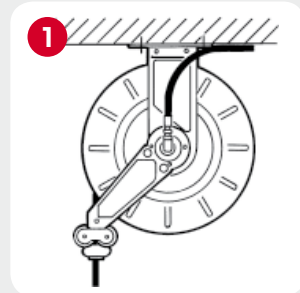
Hose reel with hose



Hose reel without hose

Hose reel installations:

1. Roof installation
2. Wall installation
3. Ground installation



Hose reel for 15 mt hose version



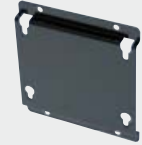
FEATURES

Accessories



ON REQUEST

Fix support plate



Weight 1,5 Kg
Pack: 300x410x100
Code Big: **F16298000**
Code Small: **F17316000**

Rotating support plate



Weight 3,5 Kg
Pack: 300x300x180
Code Big: **F16279000**
Code Small: **F17317000**

Junction hose



1" x 1" BSP - Length 1 m
Code: **F16367000**

PRODUCTS' RANGE TECHNICAL DATA

Code	Description	Fluids type	Hose (*) BSP	Max operating pressure bar	Pressure drop bar	Inlet with swivel BSP	Outlet hosedtail BSP	Hose max length bound* m	Hose length m
Without hose									
F00750000	Hosereel 3/4" BIG	D	3/4"	10	0,15 @ 60 l/min	1" male	3/4"	14	-
F00750010	Hosereel 1" BIG	D	1"	10	0,2 @ 80 l/min	1" male	1"	10	-
F00750080	Hosereel 3/4" SMALL	D	3/4"	10	0,15 @ 60 l/min	1" male	3/4"	10	-
F0075018A	Hosereel 15 x 1" XL	D	1"	15	1 @ 80 l/min	1" female	1" male	15	-
With hose									
F00750020	Hosereel 8 x 1" BIG	D	1"	10	0,6 @ 80 l/min	1" female	1" male	-	8
F00750030	Hosereel 10 x 1" BIG	D	1"	10	0,7 @ 80 l/min	1" female	1" male	-	10
F00750040	Hosereel 10 x 3/4" BIG	D	3/4"	10	0,7 @ 60 l/min	1" female	1" male	-	10
F00750090	Hosereel 8 x 3/4" SMALL	D	3/4"	10	0,6 @ 60 l/min	1" female	1" male	-	8
F00750100	Hosereel 14 x 3/4" BIG	D	3/4"	10	0,6 @ 60 l/min	1" female	1" male	-	14
F00750190	Hosereel 15 x 1" XL	D	1"	15	1 @ 80 l/min	1" female	1" male	-	15
F00750130	Hosereel 10 x 3/4" BIG GASOLINE	D G	3/4"	15	0,7 @ 80 l/min	1" female	1" male	-	10

(*) Minimum radius of curvature for 3/4 hose sizes " and 1" of at least 130mm; electrically, the hose must be conductor R < 1 MOhm/m
Curvatura máxima de 3/4" y 1" al menos de 130 mm; eléctricamente, el tubo ha de ser conductor R < 1 MOhm/m
Raio mínimo de curvatura para o tubo de 3/4" e 1", de pelo menos de 130 mm.; o tubo deve electricamente condutor R < 1 MOhm/m