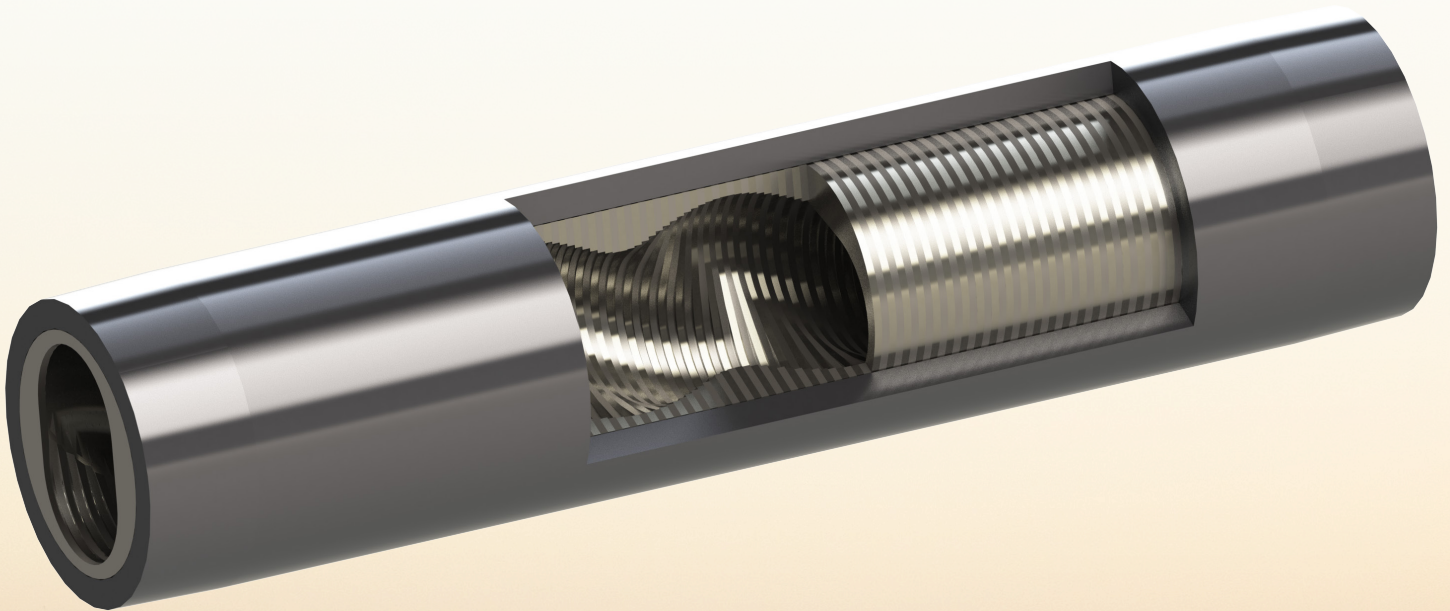




REVOLUTIONARY  
DRY-RUN  
POSITIVE-DISPLACEMENT  
**PUMP**





# Roper Pumps is proud to introduce **XERIC™**

a high-performance positive displacement pump for extreme pressures and temperatures requiring little maintenance. Finally, a progressing cavity pump that's built to last by eliminating the main wear component.

The metal-on-metal **XERIC** pump is designed & engineered for the most challenging applications:

- **Elastomer-incompatible fluids**
- **High pressures**
- **Temperatures to 400°F (204°C)**
- **Viscosities from 320cSt to 1,000,000cSt**
- **Multiphase flow**
- **Shear-sensitive liquids**
- **Potential dry-run installations**

To create **XERIC**, we incorporated our revolutionary *DuraTorque* technology used worldwide in the most rigorous downhole applications.

- **Patented laminated disk design**
- **No elastomer requiring lubrication or cooling**
- **A single proprietary cartridge lip seal**
- **Labyrinth seal effect between precision fit rotor and proprietary XERIC alloy steel stator**
- **Rotor/stator set that's easy to retrofit; no complicated timing gears or oil baths found in other types of pumps**

## WHERE THE RUBBER HITS THE ROAD

Whether due to the application, upstream equipment failure, or human error, no installation is perfect. Instead of offering expensive, unreliable sensors that simply warn of impending failure, **XERIC** eliminates the stator elastomer altogether. Chances of costly catastrophic failures are greatly reduced with no stator rubber to chunk, degrade, delaminate, or debond.

## PROVEN RUN DRY ABILITY

Some traditional positive displacement pumps fail within *minutes* if starved of liquid. **XERIC** has run for two days straight absolutely dry – without damage or loss of performance. Even if run dry, **XERIC** is designed to minimize costly repairs and, even more importantly, minimizes down time.

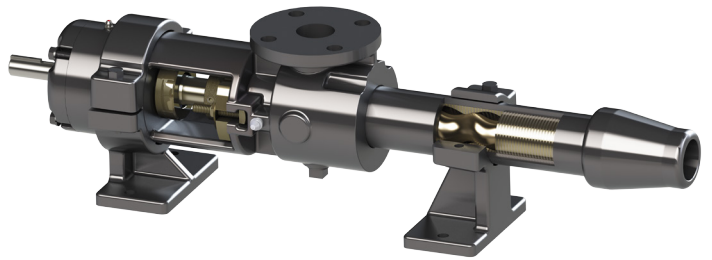
## BRING US YOUR CHALLENGES

See how **XERIC** can provide an application-specific solution to your toughest pumping challenges.

Contact your authorized Roper Pump Dealer for more information about **XERIC** or visit [www.roperpumps.com](http://www.roperpumps.com).

# Introducing the **XERIC™** Legacy Series

a design based on the most common progressing cavity pumps in North America. The **XERIC™** Legacy Series exponentially broadens the capability of this industry workhorse.



What's more, this style of pump is now capable of handling applications previously addressed with problematic rotary lobe, peristaltic, and diaphragm style pumps.

Pump Model	Approx. Gal/100 Rev		Max Speed	Max Pressure	Max Temp.
	(l/100 Rev)				
<b>913025</b>	.25 (.946)		800 RPM	150 PSI (10 Bar)	400°F (204°C)
<b>923025</b>	.25 (.946)		800 RPM	300 PSI (20 Bar)	400°F (204°C)
<b>91201</b>	1 (3.785)		800 RPM	150 PSI (10 Bar)	400°F (204°C)
<b>92201</b>	1 (3.785)		800 RPM	300 PSI (20 Bar)	400°F (204°C)
<b>91202</b>	2 (7.57)		800 RPM	150 PSI (10 Bar)	400°F (204°C)
<b>92202</b>	2 (7.57)		800 RPM	300 PSI (20 Bar)	400°F (204°C)
<b>91205</b>	5 (18.93)		800 RPM	150 PSI (10 Bar)	400°F (204°C)
<b>92205</b>	5 (18.93)		800 RPM	300 PSI (20 Bar)	400°F (204°C)
<b>91212</b>	12 (45.42)		600 RPM	150 PSI (10 Bar)	400°F (204°C)
<b>92212</b>	12 (45.42)		600 RPM	300 PSI (20 Bar)	400°F (204°C)
<b>91219</b>	19 (71.92)		500 RPM	150 PSI (10 Bar)	400°F (204°C)
<b>92219</b>	19 (71.92)		500 RPM	300 PSI (20 Bar)	400°F (204°C)
<b>91228</b>	28 (105.99)		500 RPM	150 PSI (10 Bar)	400°F (204°C)
<b>92228</b>	28 (105.99)		500 RPM	300 PSI (20 Bar)	400°F (204°C)
<b>91444</b>	44 (166.55)		500 RPM	150 PSI (10 Bar)	400°F (204°C)
<b>92444</b>	44 (166.55)		500 RPM	300 PSI (20 Bar)	400°F (204°C)

The Legacy Series will soon be joined by the ES which will include a comprehensive range of long coupled, bloc mount, and wide throat pumps.

Contact your authorized Roper Pump Dealer for more information about **XERIC** or visit [www.roperpumps.com](http://www.roperpumps.com).





**PROUDLY MADE IN THE U.S.A.**



**YOUR AUTHORIZED  
ROPER PUMP COMPANY DEALER:**

*Please Note:*

*The stator can heat to 250°F during prolonged dry run conditions, and dry running the pump is only possible using available cartridge seal. Always consult Roper Pump Company's experienced team of Application Engineers to determine the best product for your specific application.*

©2015 by Roper Pump Company.

*To the extent the user is entitled to disclose and distribute this document, the user may forward, distribute, and/or photocopy this copyrighted document only if unaltered and complete, including all of its headers, footers, disclaimers, and other information. You may not copy this document to a website. Roper Pump Company does not guarantee the typical (or other) values. The information contained in this document is for reference only. The user is solely responsible for all determinations regarding any use of material or product and any process in its territories of interest. Roper Pump Company expressly disclaims liability for any loss, damage, or injury directly or indirectly suffered or incurred as a result of or related to anyone using or relying on any of the information in this document.*

**Always consult Roper Pump Company to select the best product for your application: (706) 335-5551 [www.roperpumps.com](http://www.roperpumps.com)**